



FORTEC
GROUP

POS-PROseries

Industrial robust monitor solution 15.6 inch

One partner, unlimited technology solutions

Designed,
developed and
made in Germany

Product Features

PROseries 15.6



Monitor description

- IP65 proof front monitor solution
- robust, slim cover offers all options for integration and various applications and various modern business scenarios
- equipped with industrial displays and designed for long term availability
- 15.6" offers second variant with high brightness display
- light and slim design presents a trendy and fantastic look
- integrated 10 finger PCAP touchscreen
- passive cooling allows operating the system under full load even at high ambient temperatures
- VESA Mounting holes for using as an HMI or mounted on a stand
- As Option: in-wall mounting frame for integration in walls



POS-RP

- featuring the Raspberry Pi CM3+ based TFT platform Artista-IoT
- driven by single 12 or 24V power supply
- industrial functions like Real-Time-Clock and others
- Basis configuration: CM3+ | 32GB
- Standard configuration: Raspberry Pi®
- As Option: WiFi - or Bluetooth adapters via LAN or USB

POS-IQ

- High performance Intel® Pentium® N4200 processor
- 4GB highspeed RAM and an industrial grade SSD with 64GB memory
- driven by single 12V-24V power supply
- As Option: WiFi - or Bluetooth adapters via LAN or USB



Robust Monitor
Series

Touchscreen
Monitors

IP 65 proof front



ARM for IoT

Panel housing

PROseries 15.6

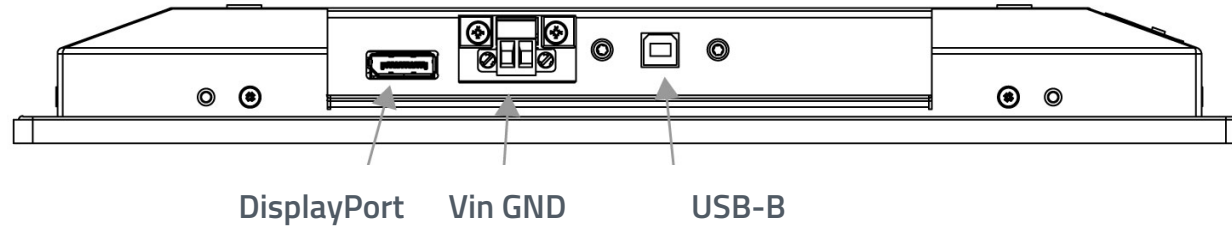
	Measure	Description	
Version		Standard	High Bright
Panel Diagonal	[mm] / [Inch]	396.2/ 15.6	
Type		POS-PROseries incl. Touchscreen	POS-PROseries HB incl. Touchscreen
Resolution	[Pixel]	1920 x 1080 (FHD)	
Luminance (center)	[cd/m ²]	320	1.200
Viewing angle (U/ D/ L/ R)	[°]	88/ 88/ 88/ 88	
Active area (H/V)	[mm]	344.2 x 193.6	
Backlight		LED	
Number of colors	[M]	16.7	
Contrast ratio		1000:1	750:1
Response time (on/off)	[ms]	25	30
Pixel class		ISO 9241-307 (pixel error class II)	
Life time back light until reaching half brightness	[h]	50.000	
Continuous operating time	[h] / [d]	24/ 7	
Mounting	[mm]	VESA 200 x 100	
Storage & Operation humidity	[%]	10 ~ 90 (non condensing)	
Panel orientation		Landscape and Portrait	Landscape or Portrait
Location of connectors and OSD buttons		Landscape mode (front view): backside middle, OSD left Portrait mode (front view): backside left, OSD top	
Housing		Front: powdered aluminum, silver RAL 9007 Backside: stainless steel	
IP rating		Front IP65	
Touchscreen number of points glass thickness [mm]		PCAP 10 ESG 1.8	
Power supply	[V]	12-24 (MO IQ) 12 or 24 (RP)	
Conformity		CE, FCC Class A, EU-RoHS	
Packaging		Single packaging	
Package Contents		Safety instructions	



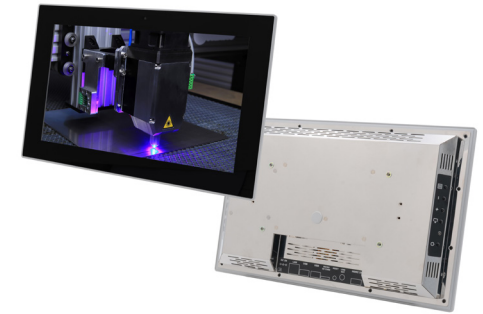
Monitor POS-PRO 15.6 front view

All figures are typical values. The real values of the panel may vary. The optical characteristics are determined after the panel has been „ON“ for approximately 30 minutes at an ambient temperature of 25° C (77° F). Life time of the backlight is defined as the time to take until the brightness reduces to 50% of its original value.

PRISMA PME - DisplayPort



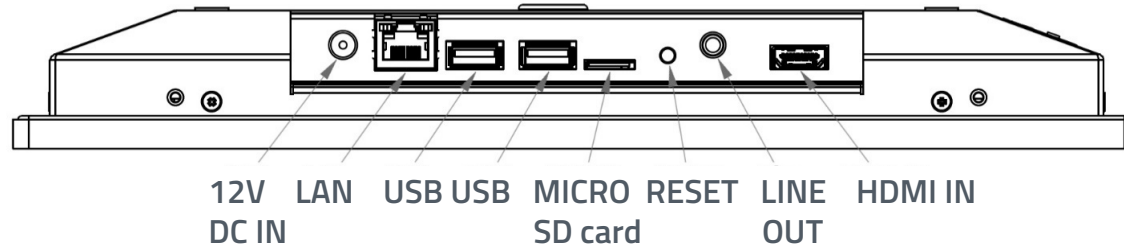
PROseries 15.6



Backside and front of POS-PRO 15.6 Monitor

		Standard Panel
Order number POS-MO-PRO		MO-06-304
Interfaces		USB-B (Touch), DisplayPort
Weight	[kg]	2.6
Dimensions (W x H x D)	[mm]	417 x 261.5 x 36.7
Power consumption (typ.)	[Watt]	14
Storage temperature	[°C] / [°F]	-30 ~ 80 / -22 ~ 176
Operating temperature	[°C] / [°F]	-20 ~ 70 / -4 ~ 158

IOT - Raspberry® IoT Controller



PROseries 15.6

WebPoster M3 is an industrial FHD network player to show websites. It is a special designed FORTEC Integrated O/S for Artista IOT monitors.

Firmware is compatible with touchscreen applications.



POS-RP-PRO 15.6 Monitor Landscape



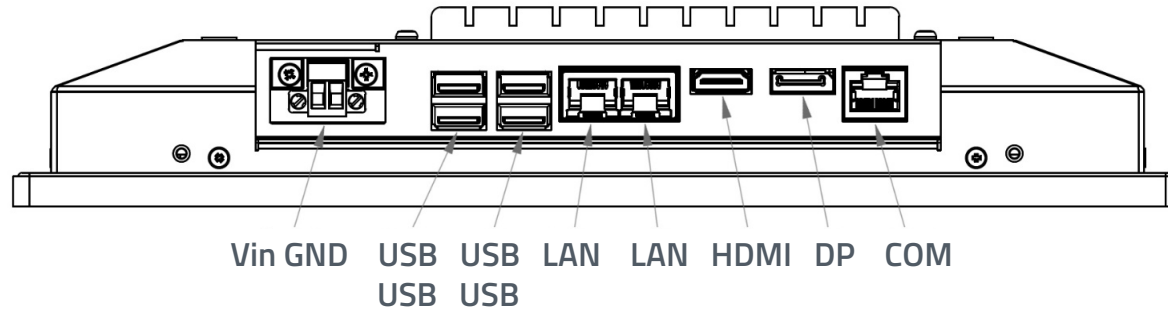
POS-RP-PRO 15.6 Monitor Portrait

		Standard Panel		High Bright Panel	
				Landscape	Portrait
Order number POS-RP-PRO		MO-06-001		MO-06-007	MO-06-012
Order number POS-VP-PRO		MO-06-051		MO-06-057	MO-06-062
Order number POS-WP-PRO		MO-06-071		MO-06-077	MO-06-082
Interfaces		1 x LAN, 2 x USB,, 1 x HDMI, 1 x Audio Line-Out, 1 x MicroSD card slot			
Raspberry® PI		CM3+, 32 GB			
Weight	[kg]	2.6		3.2	3.2
Dimensions (W x H x D)	[mm]	417 x 261.5 x 33.7		417 x 261.5 x 39.8	261.5 x 417 x 39.8
Power consumption (typ.)	[Watt]	14		14	14
Storage temperature	[°C] / [°F]	-20 ~ 70 / -4 ~ 158			
Operating temperature	[°C] / [°F]	-20 ~ 50 / -4 ~ 122			

PC Intel® - Pentium®



PROseries 15.6



Backside and front of POS-IQ-PRO 15.6 Monitor

		Standard Panel
Order number POS-IQ-PRO		MO-06-109
Interfaces		1 x DP, 1 x HDMI, 2x Ethernet RJ45, 4x USB 3.0
PC		CPU: Intel® Pentium® N42000 processor, RAM: 4 GB DDR3L, Storage: min. 64 GB M.2 SATA
Weight	[kg]	2.7
Dimensions (W x H x D)	[mm]	367 x 233 x 49
Fan		no, passive cooling
Power consumption (typ.)	[Watt]	23.3
Storage temperature	[°C] / [°F]	0 ~ 60/ 32 ~ 140
Operation temperature	[°C] / [°F]	0 ~ 50/ 32 ~ 122

Accessories

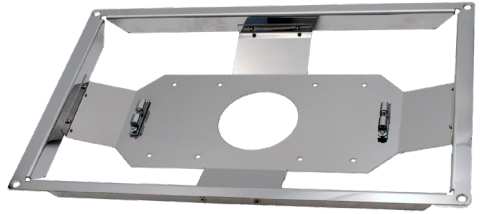
Article	order no.	Description
In-Wall Mounting Frame	MK-06-005	POS-PRO In-Wall mounting Frame 15.6 inch MO-06-001 for a variety of integrations in concrete, wooden, or drywall constructions
	MK-06-023	POS-PRO In-Wall mounting Frame 15.6 inch MO-06-304 for a variety of integrations in concrete, wooden, or drywall constructions
	MK-06-018	POS-RP-PRO High Bright In-Wall mounting Frame 15.6 inch MO-06-007 and MO-06-012 for a variety of integrations in concrete, wooden, or drywall constructions
	MK-06-019	POS-IQ-PRO In-Wall mounting Frame 15.6 inch MO-06-109 for a variety of integrations in concrete, wooden, or drywall constructions

Article	order no.	Description
Power supply 12V/ 5A	NT-01-062	AC Adapter C14/12V5A
Power cord EU	DB-07-225	IEC PowerCord (EU-C13) 3x0,75 black, 1,8m
Power cord UK	DB-07-226	Power Cord (UK - C13) black, 1,8m
Power cord USA	DB-07-238	Power Cord (US-C13) black, 1,8m/6 feet
DisplayPort cable	KA-40-105	Cable DisplayPort 1.2 4k male/ male, 2m

Article	order no.	Description
WiFi	PC-05-071	DELOCK 12462 WLAN Stick/Antenna USB 2.0 for POS-RP-PRO ans POS-IQ-PRO

PROseries 15.6

Mounting



In-Wall Mounting Frame of POS-PRO 15.6 Monitor

Power | Cable

Others

Accessories

PROseries 15.6

Software

Article	order no.	Description
WIN 10 IOT	LC-10-001	Windows 10 IoT Enterprise for POS-IQ-PRO
Android 13	on request	Android 13 for POS-IQ-PRO

Windows 10 IoT Enterprise is a full version of Windows 10 that provides enterprise manageability and security for embedded devices and IoT solutions such as medical devices, industrial automation, measurement systems, and more. It's a binary equivalent of Windows 10 Enterprise, so you can use the same familiar development and management tools as you would on client PCs and laptops. The embedded version of Windows 10 IoT Enterprise is supported by Microsoft for at least 10 years.

The information contained in this document has been carefully researched and is, to the best of our knowledge, accurate. However, we assume no liability for any product failures or damages, immediate or consequential, resulting from the use of the information provided herein. Our products are not intended for use in systems in which failures of product could result in personal injury. All trademarks mentioned herein are property of their respective owners. | Copyright 2025 FORTEC Integrated GmbH. All specifications are subject to change without notice.

Our corporate network supports you worldwide with branches in Germany, Austria, Switzerland, the UK and the USA, Great Britain and the USA. For further information, please contact us:

CONTACT

FORTEC GROUP

FORTEC Elektronik AG | Augsburg Str. 2b | 82110 Germering
+49 89 894450-0
info@fortecag.de | www.fortecag.de

FORTEC INTEGRATED

FORTEC Integrated GmbH | Augsburg Str. 2b | 82110 Germering
+49 89 894363-0
info@fortec-integrated.de | www.fortec-integrated.de

FORTEC EGYPT

FORTEC Electronic Design and Solutions Egypt SMLC | Linx Business Park | Unit B318
Smart Village | Giza Governorate
+49 89 894363-0
info@fortec-integrated.de | www.fortec-integrated.de

FORTEC POWER

FORTEC Power GmbH | Lise-Meitner-Straße 3 | 64560 Riedstadt
+49 6158 8285-0
weborder@fortec-power.de | www.fortec-power.de

AUTRONIC Steuer und Regeltechnik GmbH | Siemensstraße 17 |
74343 Sachsenheim
+49 7147 24-0
vertrieb@autronic.de | www.autronic.de

FORTEC CZECH REPUBLIC

FORTEC Czech Republic s.r.o. | Přátelství 275 | 330 02 Dýšina
+420 377 845878
fortec@fortec.cz | www.fortec.cz

FORTEC SWITZERLAND

FORTEC Switzerland AG | Bahnhofstraße 3 | 5436 Würenlos
+41 44 7446111
info@fortec.ch | www.fortec.ch

FORTEC UNITED KINGDOM

FORTEC Technology UK Ltd. | Osprey House | 1 Osprey Court
Hinchingbrooke Business Park | Huntingdon | Cambridgeshire | PE29 6FN
+44 1480 411600
info@fortec.uk | www.fortec.uk

FORTEC UNITED STATES

FORTEC US, Corp. | 87 Raynor Avenue Unit 1 | Ronkonkoma | NY | 11779
+1 631 5804360
info@fortec.us | www.fortec.us