

PRELIMINARY



**FORTEC**  
GROUP

**BLO-Line®**

Blaze load optimized 4K monitors 42.5 inch — according to class A1

One partner, unlimited technology solutions



# Product Features

Designed,  
developed and  
made in Germany

BLO-Line® 4K 42.5



BLO-Line® - PRODUCT OF THE YEAR 2024  
Feuertrutz-Award in the category structural fire protection

Fire safety regulations prevent the installation of devices that increase fire load and promote the development of smoke gases. FORTEC Integrated has specifically developed a monitor series that offers optimal fire protection.

- BLO-Line® 4K monitors are fully functional units certified according to fire protection class A1, which means they meet the highest standards for fire protection.
- The certification was carried out based on the strictest European standards and verified and confirmed by independent experts.
- Our monitors are classified according to the European standard DIN EN13501-1 and fulfill the requirements of the VdS 6024 for fire protection of electrical devices in sensitive areas.
- Additional options such as integrated extinguishing devices make BLO-Line® 4K monitor ideal for use in public buildings such as hospitals, universities, schools, and airports.
- The monitors are available as regular monitors, IoT systems, or standalone systems with integrated PCs, they offer flexible application possibilities without expensive and heavy fireproof enclosures.
- BLO-Line® 4K monitors meet the strict smoke development requirements of the German MVVTB:2024/01. While the TSP600s limit for MVVTB is 35 m<sup>2</sup> and for the EU norm EN13501-1:2019-05 it is 50 m<sup>2</sup>, BLO-Line with 21 m<sup>2</sup> is well below the requirements of both standards.

Our BLO-Line® 4K monitors are the perfect solution for maximum safety demands and easy installation. Trust the quality and reliability of FORTEC Integrated when it comes to fire protection in public areas.

Suitable for escape  
and rescue routes



Fire protection  
according to class A1

Fully functional unit  
is certified

Without additional  
fireproof enclosure

Fördermitglied im FORTEC Integrated is supporting member of  
Bundesverband Brandschutz-Fachbetriebe e.V.  
bvbfbf More about BLO: [www.brandschutzmonitore.de](http://www.brandschutzmonitore.de)

# Panel and housing

	Measure	Description
Panel Diagonal & Pixel class	[mm] / [Inch]	1079.5/ 42.5   ISO 9241-307 (pixel error class II)
Type		BLO-Line monitor with glass and bezel
Resolution	[Pixel]	3.840 x 2.160 (4K)
Luminance (center)	[cd/m²]	560
Viewing angle (U/ D/ L/ R)	[°]	89/ 89/ 89/ 89
Active area (H/V)	[mm]	941.50 x 530.00
Backlight & Number of colors	...   [M]	LED   1070
Contrast ratio	...   [ms]	4000:1   8
Life time back light until reaching half brightness	[h]	70.000
Continuous operating time	[h] / [d]	24/ 7
Mounting	[mm]	Wall mount included
Storage temperature	[°C] / [°F]	-20 ~ 60 / -4 ~ 140
Operating temperature	[°C] / [°F]	0 ~ 40/ 32 ~ 104
Storage & Operation humidity	[%]	10 ~ 80 (non condensing)   30 ~ 80 (non condensing)
Panel orientation		Versions in Landscape and Portrait
Location of connectors and OSD buttons		Connector: Front View right (Landscape), Front View top (Portrait) OSD: Front View left (Landscape), Front View bottom (Portrait)
Housing		Powdered steel sheet, black RAL 9005
Glass		Fire protection glass, 7 mm
Power supply	[V]	AC 110-240/ 50-60 Hz
Weight	[kg]	30.0
Dimension (W x H x D)	[mm]	998 x 591x 83
Conformity		CE, FCC Class A, EU-RoHS, A1 according to EN13501-1
Packaging		Single packaging for cargo pallet (max. 3 packages p.p.)
Package Contents		Safety instructions, power cable DB-07-607, BLO-Line® certificate, mounting instruction, energy classification label

## BLO-Line® 4K 42.5



BLO-Line® 4K 42.5 monitor

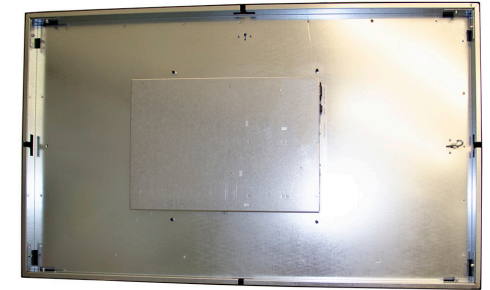
All figures are typical values. The real values of the panel may vary. The optical characteristics are determined after the panel has been „ON“ for approximately 30 minutes at an ambient temperature of 25° C (77° F).

Life time of the backlight is defined as the time to take until the brightness reduces to 50% of its original value.

## Video PME - VGA, HDMI, DisplayPort

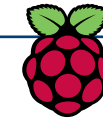
Order number Landscape		MO-41-013
Order number Portrait		MO-41-047
Interfaces		1x HDMI 1.4; 1 x HDMI 2.0; 1x DP 1.4; 1x Audio 3,5mm, USB B (Touch)
Power consumption (typ.)	[Watt]	120

## BLO-Line® 4K 42.5

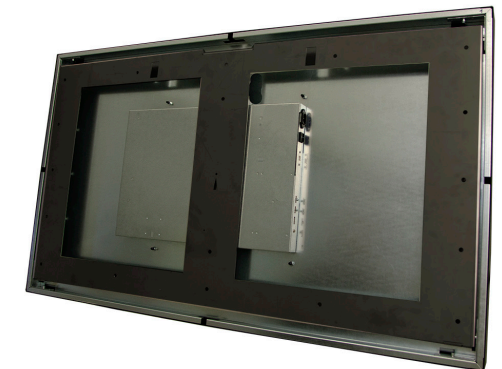


BLO-Line® 4K 42.5 monitor backside without wall mount

## IOT - Raspberry® IoT Controller



Order number Landscape		MO-41-017
Order number Portrait		MO-41-051
Interfaces		2x USB-A; 2x USB-C; 1x Audio 3,5mm; Micro-HDMI (4k, 60Hz); LAN RJ45
Raspberry® PI		CM3+, CM 4, 32 GB
Power consumption (typ.)	[Watt]	110



BLO-Line® 4K 42.5 monitor backside incl. wall mount (darker coloured for demonstration)

# Options

Order number Landscape	MO-41-014	Touch monitor with Prisma 4K
	MO-41-018	Touch monitor with Raspberry® IoT
Order number Portrait	MO-41-048	Touch monitor with Prisma 4K
	MO-41-052	Touch monitor with Raspberry® IoT
Touch technology		PCAP touch, 10 touch points, projected capacitive
Glass		Fire protection glass 6.5 mm
Can be combined with		—

## BLO-Line® 4K 42.5

### Touch integrated



BLO-Line® 4K 42.5 monitor with touch screen

Product	Order no.	Product description
Extinguishing cartridge	DS-92-079	Higher safety in cases of fire for all versions of BLO-Line®
Bezel with cable feedthrough	MO-41-022	Front bezel with outlet for cable feed BLO-Line® 4K 42.5, to cover the cable connections
Barcode Scanner	on request	Barcode Scanner in front behind the glass

### Additional

Copyright 2025 FORTEC Integrated. Information in the document is subject to change without prior notice.

Our corporate network supports you worldwide with branches in Germany, Austria, Switzerland, the UK and the USA, Great Britain and the USA. For further information, please contact us:

# CONTACT

## FORTEC GROUP

**FORTEC Elektronik AG** | Augsburg Str. 2b | 82110 Germering  
+49 89 894450-0  
info@fortecag.de | [www.fortecag.de](http://www.fortecag.de)

## FORTEC INTEGRATED

**FORTEC Integrated GmbH** | Augsburg Str. 2b | 82110 Germering  
+49 89 894363-0  
info@fortec-integrated.de | [www.fortec-integrated.de](http://www.fortec-integrated.de)

## FORTEC EGYPT

**FORTEC Electronic Design and Solutions Egypt SMLC** | Linx Business Park | Unit B318  
Smart Village | Giza Governorate  
+49 89 894363-0  
info@fortec-integrated.de | [www.fortec-integrated.de](http://www.fortec-integrated.de)

## FORTEC POWER

**FORTEC Power GmbH** | Lise-Meitner-Straße 3 | 64560 Riedstadt  
+49 6158 8285-0  
weborder@fortec-power.de | [www.fortec-power.de](http://www.fortec-power.de)

**AUTRONIC Steuer und Regeltechnik GmbH** | Siemensstraße 17 |  
74343 Sachsenheim  
+49 7147 24-0  
vertrieb@autronic.de | [www.autronic.de](http://www.autronic.de)

## FORTEC CZECH REPUBLIC

**FORTEC Czech Republic s.r.o.** | Přátelství 275 | 330 02 Dýšina  
+420 377 845878  
fortec@fortec.cz | [www.fortec.cz](http://www.fortec.cz)

## FORTEC SWITZERLAND

**FORTEC Switzerland AG** | Bahnhofstraße 3 | 5436 Würenlos  
+41 44 7446111  
info@fortec.ch | [www.fortec.ch](http://www.fortec.ch)

## FORTEC UNITED KINGDOM

**FORTEC Technology UK Ltd.** | Osprey House | 1 Osprey Court  
Hinchingbrooke Business Park | Huntingdon | Cambridgeshire | PE29 6FN  
+44 1480 411600  
info@fortec.uk | [www.fortec.uk](http://www.fortec.uk)

## FORTEC UNITED STATES

**FORTEC US, Corp.** | 87 Raynor Avenue Unit 1 | Ronkonkoma | NY | 11779  
+1 631 5804360  
info@fortec.us | [www.fortec.us](http://www.fortec.us)