

Datasheet

ASUS IoT

X7211RE-IM-A

**3.5" SBC, Intel® Atom® X7835RE, DDR5 SO-DIMM, 5G, LTE, WiFi 5/6/6E
DP, HDMI, eDP/LVDS, Dual-LAN, Multiple COM, USB3.2, M.2, SATA 3.0, PCIE 3.0, TPM**

FORTEC
UNITED STATES



FORTEC
INTEGRATED



FORTEC
UNITED KINGDOM



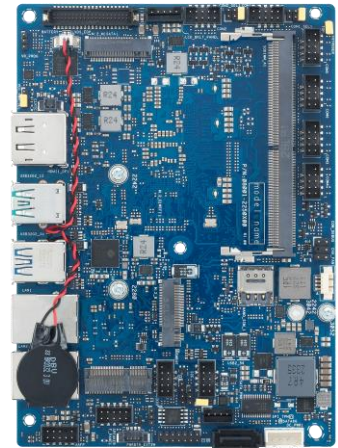
The information contained in this document has been carefully researched and is, to the best of our knowledge, accurate. However, we assume no liability for any product failures or damages, immediate or consequential, resulting from the use of the information provided herein. Our products are not intended for use in systems in which failures of product could result in personal injury. All trademarks mentioned herein are property of their respective owners. All specifications are subject to change without notice.

X7211RE-IM-A

3.5" SBC, Intel® Atom® X7211RE, DDR5 SO-DIMM, 5G, LTE, WiFi 5/6/6E
DP, HDMI, eDP/LVDS, Dual-LAN, Multiple COM, USB3.2, M.2, SATA 3.0, PCIE 3.0, TPM

Features

- Intel® Amston Lake SoC, Low Power Consumption at 6W TDP
- 3x Display Configuration with Multiple Interface: HDMI, DP, eDP/LVDS
- Integrated Intel® UHD Graphics up to 4K/60 Hz
- 6 COM ports, 2x RS-232/422/485 and 4x RS-232
- M.2 E-key 2230, M-key 2242/2280, B key 3042/3052, SATA 3.0
- Wide Voltage: 9~36V; Wide Operating Temperature: -20° ~ 70°C
- Built-in AI Acceleration with Intel® Deep Learning Boost



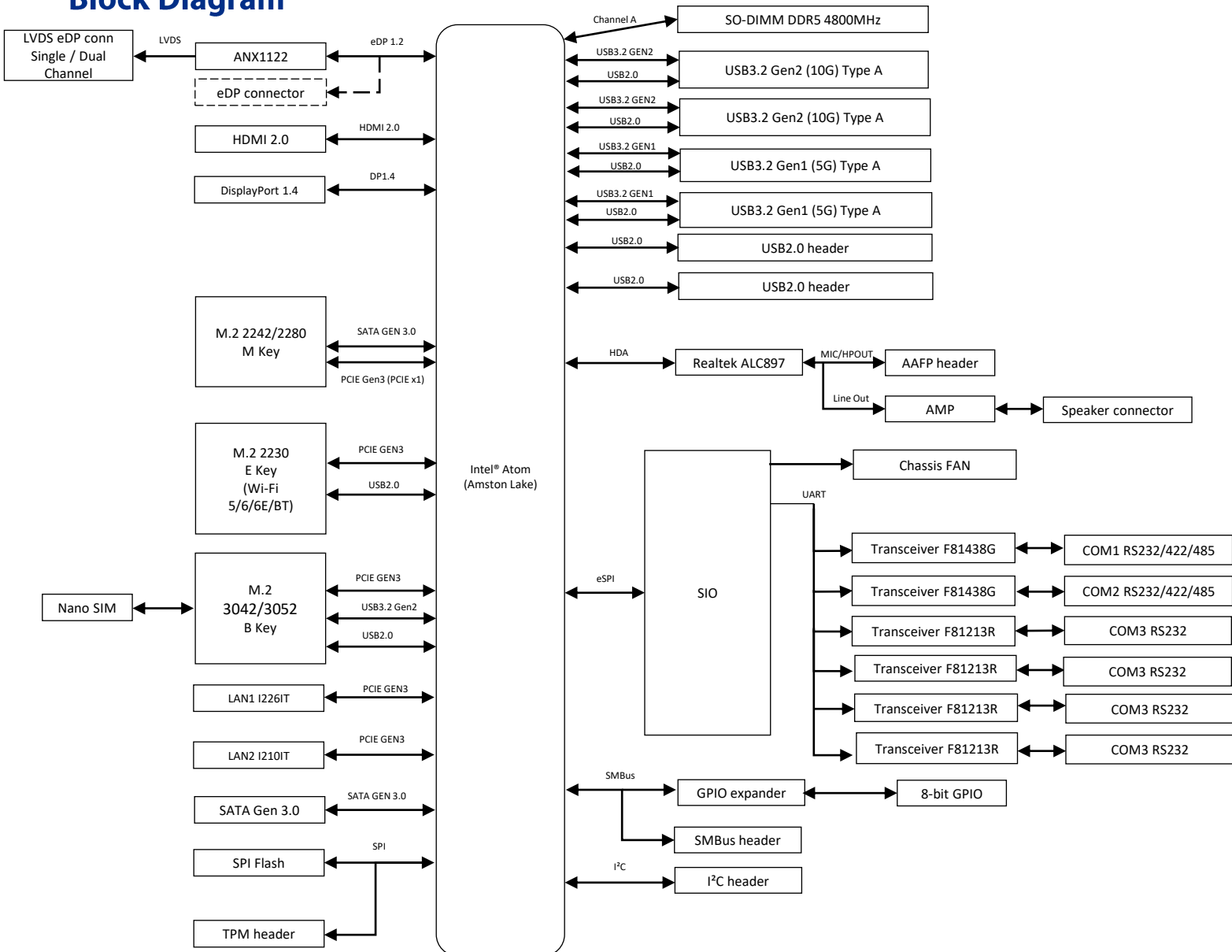
Specifications

Processor	CPU	Intel® Atom® X7211RE
	TDP	6W
	# of Cores	2
	Base Frequency	1.0 GHz
	Max. Turbo Frequency	3.2 GHz
Memory	Technology	DDR5 4800 MHz, In-Band ECC (IB ECC)
	Max.	16GB
	Socket	SO-DIMM
Display	Controller	Integrated Intel® UHD Graphics
	HDMI	1, Supports HDMI 2.0 up to 4K x 2K @ 60 Hz
	Display Port	1, Supports DP1.4 up to 4096 x 2304 @ 60 Hz
	LVDS	1, Supports 1920 x 1080 @ 60 Hz (co-lay with eDP 1.2)
	Multiple Display	3 Display Configuration: HDMI+DP+LVDS/eDP
Expansion Slot	M.2	1 x M.2 Socket 1 with E key, type 2230 for TPU/WIFI/BT device (PCIe/USB)
		1 x M.2 Socket 3 with M key, type 2242/2280 (SATA mode/PCIEx1)
		1 x M.2 Socket 2 with B key (3042/3052) for 4G/5G (PCIe/USB2.0/USB3.2 Gen2)
Ethernet	Speed	10/100/1000Mbps/2.5G
	Controller	1x Intel® i210IT, supports WOL/PXE 1x Intel® i226IT (2.5G), supports WOL/PXE
	Connector	2 x RJ-45
Audio	Codec	Realtek® ALC897 AMP 3W
Storage	SATA port	1 x SATA Gen 3.0 (6Gb/s)
Rear I/O	HDMI	1
	Display Port	1
	USB3.2	2x Gen2 (10 Gb/s) & 2x Gen1(5 Gb/s)
	Ethernet	2 (1G; 2.5G)
Internal Connector	Serial Port	6 (2 x RS-232/422/485, 4x RS-232)
	USB2.0	2
	Chassis Fan Header	1 (PWM+DC Mode)
	Chassis Intrusion Header	1
	Front Panel Audio Header (AAFP)	1
	System Panel Header	1 (10-1 Pin)
	Clear CMOS Jumper	1
	SATA Power Header	1
	SMBus Header	1
	I ² C Header	1
	GPIO Header	1 (8-bit)
Power Connector	1 x 4-pin Power Connector	

Specifications

Watchdog Timer	H/W	YES
Security	TPM	1 x SPI TPM header; Intel® PTT
	Platform Integrity	Intel® OS Guard; Intel® Boot Guard
Power	Power Type	DC power input
	Voltage	9V-36V
Operating System	Microsoft Windows	Windows® 10 (64bit)/Windows® 10 IoT Enterprise/ Windows® 11 IoT Enterprise
	Linux	Ubuntu, RedHat Enterprise, Fedora Workstation
Environment	Operating Temperature	-20~ 70°C
	Non Operating Temperature	-40~ 85°C
	Relative Humidity	10%~95%
Dimension	Form Factor	3.5", 146 x 105 mm
Certification	Safety	CB, BSMI, CE-LVD
	EMC	CE, FCC, VCCI, BSMI, RCM
	Green	GA (RoHS)

Block Diagram



Order Information

Model name	Part number	Description
X7211RE-IM-A	90ME09D*	X7211RE,DDR5 SO DIMM,DUAL LAN, MB

* The part number might vary for different regulations and package. Please consult the TPM in your region for exact 90PN.

Packing List

Part number	Description	Quantity
14013*	SATA 6G CABLE	1

* The part number might vary due to part number revision.

Our company network supports you worldwide with offices in Germany, Austria, Switzerland, the UK and the USA.
For more information please contact:

Headquarters

Germany



FORTEC
GROUP

FORTEC Elektronik AG
Augsburger Str. 2b
82110 Germering

Phone: +49 89 894450-0
E-Mail: info@fortecag.de
Internet: www.fortecag.de

Fortec Group Members

Austria



FORTEC
INTEGRATED

FORTEC Integrated GmbH Office Vienna
Nuschinggasse 12
1230 Wien

Phone: +43 1 8673492-0
E-Mail: info@fortec-integrated.de
Internet: www.fortec-integrated.de

Germany



FORTEC
INTEGRATED

FORTEC Integrated GmbH
Augsburger Str. 2b
82110 Germering

Phone: +49 89 894363-0
E-Mail: info@fortec-integrated.de
Internet: www.fortec-integrated.de

Switzerland



FORTEC
SWITZERLAND

FORTEC Switzerland AG
Bahnhofstraße 3
5436 Würenlos

Phone: +41 44 7446111
E-Mail: info@fortec.ch
Internet: www.fortec.ch

United Kingdom



FORTEC
UNITED KINGDOM

FORTEC Technology UK Ltd.
Osprey House, 1 Osprey Court
Hinchingbrooke Business Park
Huntingdon, Cambridgeshire, PE29 6FN

Phone: +44 1480 411600
E-Mail: info@fortec.uk
Internet: www.fortec.uk

USA



FORTEC
UNITED STATES

FORTEC US, Corp.
87 Raynor Avenue, Unit 1
Ronkonkoma, NY 11779

Phone: +1 631 5804360
E-Mail: info@fortec.us
Internet: www.fortec.us